

# Springwell Solar Farm

ES Volume 2: Figures

Chapter 5: Approach to the EIA

APFP Regulation 5(2)(a)

Planning Act 2008

Infrastructure Planning  
(Applications: Prescribed Forms  
and Procedure) Regulations 2009

EN010149/APP/6.2

November 2024

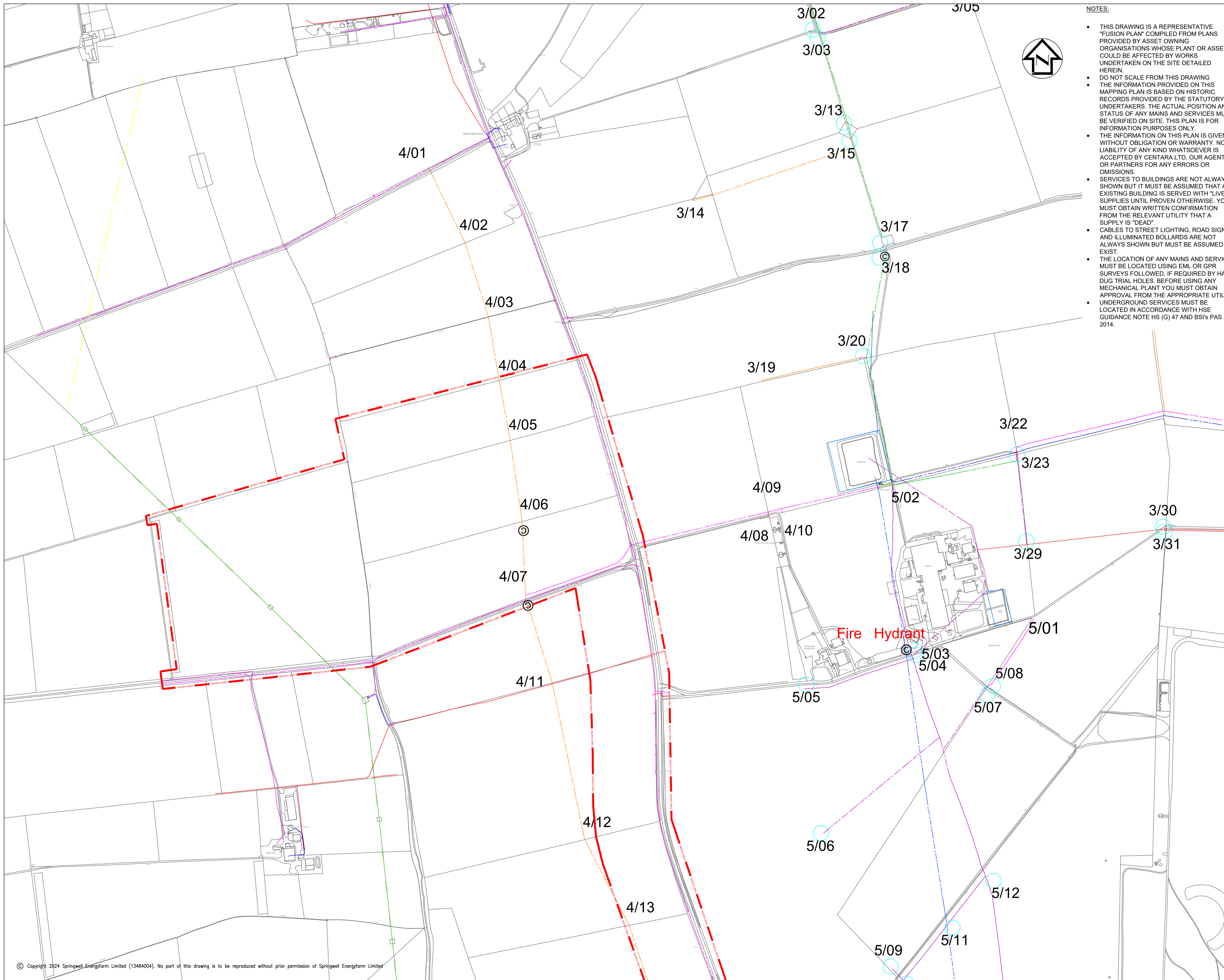
Springwell Energyfarm Ltd



# ES Volume 2: Figures

## Chapter 5: Approach to the EIA

Drawing number	Revision number	Drawing title	Scale
<b>Figure 5.1</b>	01	Desk-based Study of Existing Utilities	A3



**NOTES:**

- THIS DRAWING IS A REPRESENTATIVE "FUSION PLAN" COMPILED FROM PLANS PROVIDED BY ASSET OWNING ORGANISATIONS WHOSE PLANT OR ASSETS COULD BE AFFECTED BY WORKS UNDERTAKEN ON THE SITE DETAILED HEREIN.
- DO NOT SCALE FROM THIS DRAWING
- THE INFORMATION PROVIDED ON THIS MAPPING PLAN IS BASED ON HISTORIC RECORDS PROVIDED BY THE STATUTORY UNDERTAKERS. THE ACTUAL POSITION AND STATUS OF ANY MAINS AND SERVICES MUST BE VERIFIED ON SITE. THIS PLAN IS FOR INFORMATION PURPOSES ONLY.
- THE INFORMATION ON THIS PLAN IS GIVEN WITHOUT OBLIGATION OR WARRANTY. NO LIABILITY OF ANY KIND WHATSOEVER IS ACCEPTED BY CENTARA LTD, OUR AGENTS OR PARTNERS FOR ANY ERRORS OR OMISSIONS.
- SERVICES TO BUILDINGS ARE NOT ALWAYS SHOWN BUT IT MUST BE ASSUMED THAT ANY EXISTING BUILDING IS SERVED WITH "LIVE" SUPPLIES UNTIL PROVEN OTHERWISE. YOU MUST OBTAIN WRITTEN CONFIRMATION FROM THE RELEVANT UTILITY THAT A SUPPLY IS "DEAD".
- CABLES TO STREET LIGHTING, ROAD SIGNS AND ILLUMINATED BOLLARDS ARE NOT ALWAYS SHOWN BUT MUST BE ASSUMED TO EXIST.
- THE LOCATION OF ANY MAINS AND SERVICES MUST BE LOCATED USING EML OR GPR SURVEYS FOLLOWED, IF REQUIRED BY HAND DUG TRIAL HOLES. BEFORE USING ANY MECHANICAL PLANT YOU MUST OBTAIN APPROVAL FROM THE APPROPRIATE UTILITY.
- UNDERGROUND SERVICES MUST BE LOCATED IN ACCORDANCE WITH HSE GUIDANCE NOTE HS (G) 47 AND BS's PAS 128 2014.

**LEGEND: KEY**

- ARELION
- BT
- COLT
- CITY FIBRE
- CSP FIBRE
- LV ELEC
- HV ELEC
- EHV ELEC
- ES PIPELINES
- EU NETWORKS
- EXOLUM
- FULCRUM
- GAMMA
- GAS - LP
- GAS - MP
- GAS - IP
- GAS - HP
- GTC ELECTRIC
- GTC GAS
- GTT

- SEE KEY BELOW**
- IRRIGATION
  - INSTALCOM
  - KCOM
  - KPN
  - LAST MILE
  - LU POWERLINK
  - NEOS NETWORK
  - LON UND
  - NEOS NET
  - SEARCH AREA
  - SEWER >>
  - SEWER >>
  - COM SEWER
  - SKY
  - TATA
  - TFL
  - VERIZON
  - VIRGIN
  - VODAFONE
  - WATER
  - ZAYO
  - BPA

**LINES MAY INDICATE MULTIPLE CABLES**

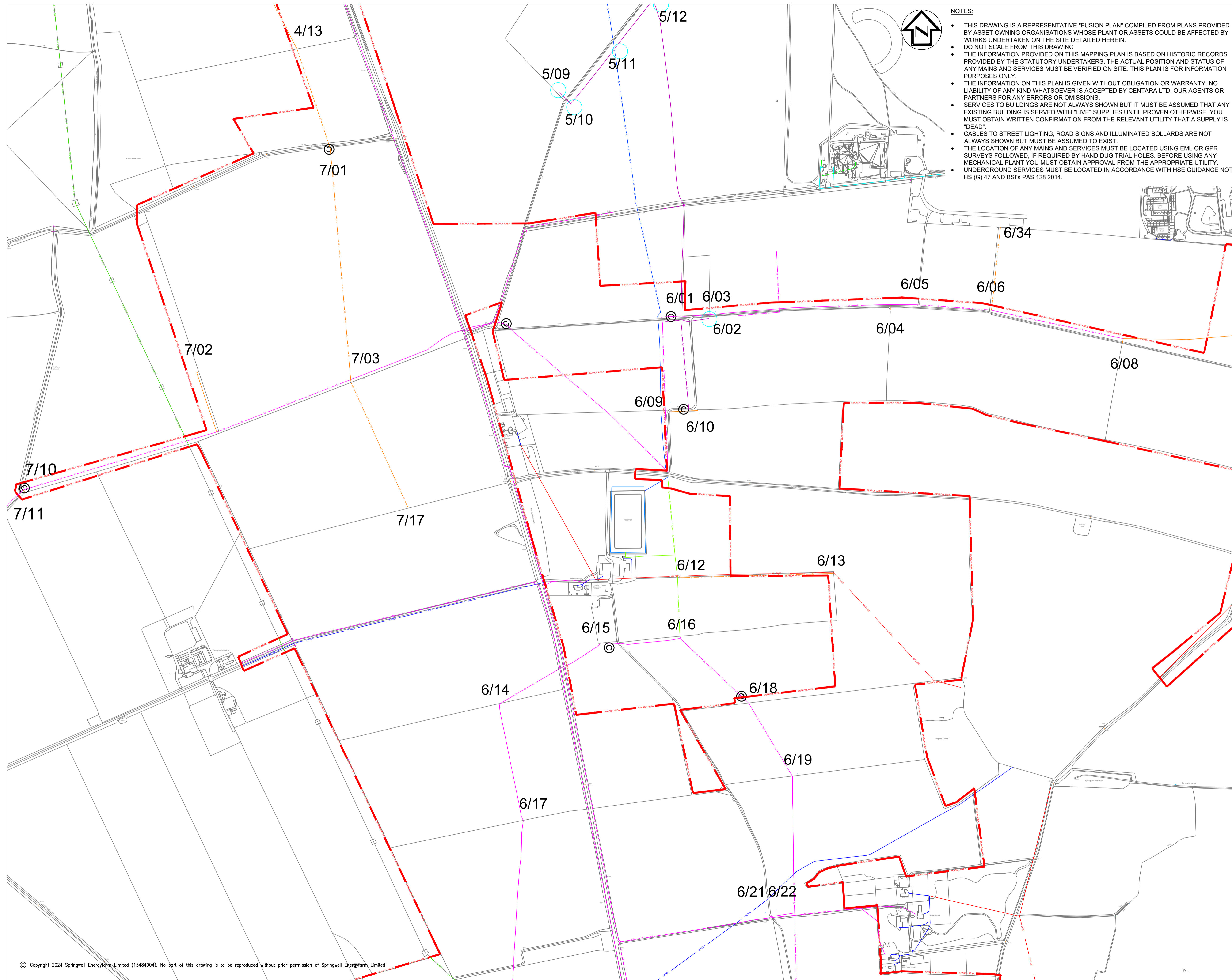
- Blankney Estates Ltd**
- IRRIGATION**
- Existing 8" plastic D
  - Existing 6" plastic D
  - Existing twin 6" cast
  - New 160mm HPVC pipe
  - New 200mm HPVC pipe
  - New 315mm HPVC pipe
  - New conveyance 315mm HPPE pipe
  - Reservoirs
  - Valve
  - Existing hydrant
  - New hydrant

REVISION	01
DATE	NOV 2024
DESCRIPTION	DCO SUBMISSION
DRAWN	WSP
CHECKED	WSP
APPROVED	EDF
DOCUMENT	ENVIRONMENTAL STATEMENT VOLUME 2: FIGURES REGULATION 5(2)(a)
TITLE	FIGURE 5.1 DESK-BASED STUDY OF EXISTING UTILITIES SHEET 1 OF 5
PINS REFERENCE	EN10149/APP16.2

SCALE:  
1:5000 @ A1

SCALE BAR:  
0 250 500 m

SCALE 1:5000



- NOTES:**
- THIS DRAWING IS A REPRESENTATIVE "FUSION PLAN" COMPILED FROM PLANS PROVIDED BY ASSET OWNING ORGANISATIONS WHOSE PLANT OR ASSETS COULD BE AFFECTED BY WORKS UNDERTAKEN ON THE SITE DETAILED HEREIN.
  - DO NOT SCALE FROM THIS DRAWING
  - THE INFORMATION PROVIDED ON THIS MAPPING PLAN IS BASED ON HISTORIC RECORDS PROVIDED BY THE STATUTORY UNDERTAKERS. THE ACTUAL POSITION AND STATUS OF ANY MAINS AND SERVICES MUST BE VERIFIED ON SITE. THIS PLAN IS FOR INFORMATION PURPOSES ONLY.
  - THE INFORMATION ON THIS PLAN IS GIVEN WITHOUT OBLIGATION OR WARRANTY. NO LIABILITY OF ANY KIND WHATSOEVER IS ACCEPTED BY CENTARA LTD, OUR AGENTS OR PARTNERS FOR ANY ERRORS OR OMISSIONS.
  - SERVICES TO BUILDINGS ARE NOT ALWAYS SHOWN BUT IT MUST BE ASSUMED THAT ANY EXISTING BUILDING IS SERVED WITH "LIVE" SUPPLIES UNTIL PROVEN OTHERWISE. YOU MUST OBTAIN WRITTEN CONFIRMATION FROM THE RELEVANT UTILITY THAT A SUPPLY IS "DEAD".
  - CABLES TO STREET LIGHTING, ROAD SIGNS AND ILLUMINATED BOLLARDS ARE NOT ALWAYS SHOWN BUT MUST BE ASSUMED TO EXIST.
  - THE LOCATION OF ANY MAINS AND SERVICES MUST BE LOCATED USING EML OR GPR SURVEYS FOLLOWED, IF REQUIRED BY HAND DUG TRIAL HOLES. BEFORE USING ANY MECHANICAL PLANT YOU MUST OBTAIN APPROVAL FROM THE APPROPRIATE UTILITY.
  - UNDERGROUND SERVICES MUST BE LOCATED IN ACCORDANCE WITH HSE GUIDANCE NOTE HS (G) 47 AND BS's PAS 128 2014.

**LEGEND:**

KEY	
ARELION	ARELION
BT	BT
COLT	COLT
CITY FIBRE	CITY FIBRE
CSP FIBRE	CSP FIBRE
LV	LV ELEC
LV	LV ELEC
HW	HW ELEC
EHV	EHV ELEC
EHV	EHV ELEC
ES PIPELINES	ES PIPELINES
EU NETWORKS	EU NETWORKS
EXOLUM	EXOLUM
FULCRUM	FULCRUM
GAMMA	GAMMA
LP GAS	GAS - LP
MP GAS	GAS - MP
IP GAS	GAS - IP
HP GAS	GAS - HP
GTC	GTC ELECTRIC
GTC	GTC GAS
GTT	GTT

SEE KEY BELOW	IRRIGATION
INSTALCOM	INSTALCOM
KCOM	KCOM
KPN	KPN
LAST MILE	LAST MILE
LU POWERLINK	LU POWERLINK
NEOS NET	NEOS NETWORK
SEARCH AREA	SEARCH AREA
SEWER >>	FW SEWER
SEWER >>	SW SEWER
SEWER >>	COM SEWER
BSKYB	SKY
TATA	TATA
TFL	TFL
VERIZON	VERIZON
VIRGIN	VIRGIN
VODAFONE	VODAFONE
WATER	WATER
ZAYO	ZAYO
BPA	BPA

**LINES MAY INDICATE MULTIPLE CABLES**

**Blankney Estates Ltd**

IRRIGATION	
Existing 8" plastic D	
Existing 6" plastic D	
Existing twin 6" cast	
New 160mm HPVC pipe	
New 200mm HPVC pipe	
New 315mm HPVC pipe	
New conveyance 315mm HPPE pipe	
Reservoirs	
Valve	
Existing hydrant	
New hydrant	

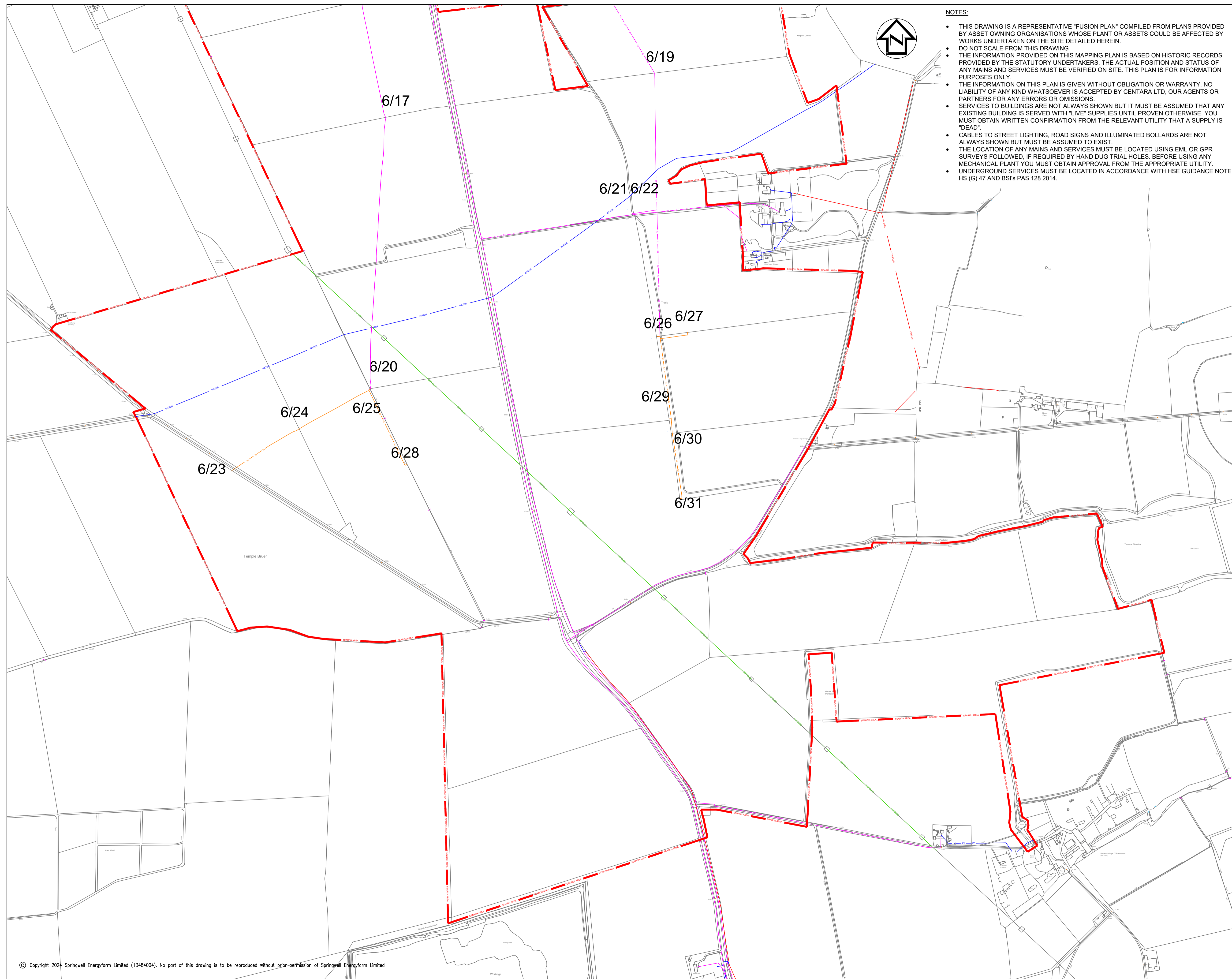
REVISION	01
DATE	NOV 2024
DESCRIPTION	DCO SUBMISSION
DRAWN	WSP
CHECKED	WSP
APPROVED	EDF
DOCUMENT	ENVIRONMENTAL STATEMENT VOLUME 2: FIGURES REGULATION 5(2)(a)
TITLE	FIGURE 5.1 DESK-BASED STUDY OF EXISTING UTILITIES SHEET 2 OF 5
PINS REFERENCE	EN10149/APP/6.2

**Springwell**  
Solar Farm

SCALE:  
1:5000 @ A1

SCALE BAR:  
0 250 500m

SCALE 1:5000



- NOTES:**
- THIS DRAWING IS A REPRESENTATIVE "FUSION PLAN" COMPILED FROM PLANS PROVIDED BY ASSET OWNING ORGANISATIONS WHOSE PLANT OR ASSETS COULD BE AFFECTED BY WORKS UNDERTAKEN ON THE SITE DETAILED HEREIN.
  - DO NOT SCALE FROM THIS DRAWING
  - THE INFORMATION PROVIDED ON THIS MAPPING PLAN IS BASED ON HISTORIC RECORDS PROVIDED BY THE STATUTORY UNDERTAKERS. THE ACTUAL POSITION AND STATUS OF ANY MAINS AND SERVICES MUST BE VERIFIED ON SITE. THIS PLAN IS FOR INFORMATION PURPOSES ONLY.
  - THE INFORMATION ON THIS PLAN IS GIVEN WITHOUT OBLIGATION OR WARRANTY. NO LIABILITY OF ANY KIND WHATSOEVER IS ACCEPTED BY CENTARA LTD, OUR AGENTS OR PARTNERS FOR ANY ERRORS OR OMISSIONS.
  - SERVICES TO BUILDINGS ARE NOT ALWAYS SHOWN BUT IT MUST BE ASSUMED THAT ANY EXISTING BUILDING IS SERVED WITH "LIVE" SUPPLIES UNTIL PROVEN OTHERWISE. YOU MUST OBTAIN WRITTEN CONFIRMATION FROM THE RELEVANT UTILITY THAT A SUPPLY IS "DEAD".
  - CABLES TO STREET LIGHTING, ROAD SIGNS AND ILLUMINATED BOLLARDS ARE NOT ALWAYS SHOWN BUT MUST BE ASSUMED TO EXIST.
  - THE LOCATION OF ANY MAINS AND SERVICES MUST BE LOCATED USING EML OR GPR SURVEYS FOLLOWED, IF REQUIRED BY HAND DUG TRIAL HOLES. BEFORE USING ANY MECHANICAL PLANT YOU MUST OBTAIN APPROVAL FROM THE APPROPRIATE UTILITY.
  - UNDERGROUND SERVICES MUST BE LOCATED IN ACCORDANCE WITH HSE GUIDANCE NOTE HS (G) 47 AND BSI'S PAS 128 2014.

**LEGEND: KEY**

ARELION	ARELION
BT	BT
COLT	COLT
CITY FIBRE	CITY FIBRE
CSP FIBRE	CSP FIBRE
LV ELEC	LV ELEC
HV ELEC	HV ELEC
EHV ELEC	EHV ELEC
ES PIPELINES	ES PIPELINES
EU NETWORKS	EU NETWORKS
EXOLUM	EXOLUM
FULCRUM	FULCRUM
GAMMA	GAMMA
GAS - LP	GAS - LP
GAS - MP	GAS - MP
GAS - IP	GAS - IP
GAS - HP	GAS - HP
GTC ELECTRIC	GTC ELECTRIC
GTC GAS	GTC GAS
GTT	GTT

**SEE KEY BELOW**

IRRIGATION	IRRIGATION
INSTALCOM	INSTALCOM
KCOM	KCOM
KPN	KPN
LAST MILE	LAST MILE
LU POWERLINK	LU POWERLINK
NEOS NETWORK	NEOS NETWORK
SEARCH AREA	SEARCH AREA
FW SEWER	FW SEWER
SW SEWER	SW SEWER
COM SEWER	COM SEWER
SKY	SKY
TATA	TATA
TFL	TFL
VERIZON	VERIZON
VIRGIN	VIRGIN
VODAFONE	VODAFONE
WATER	WATER
ZAYO	ZAYO
BPA	BPA

**LINES MAY INDICATE MULTIPLE CABLES**

**Blankney Estates Ltd**

IRRIGATION	IRRIGATION
Existing 8" plastic D	Existing 8" plastic D
Existing 6" plastic D	Existing 6" plastic D
Existing twin 6" cast	Existing twin 6" cast
New 160mm HPVC pipe	New 160mm HPVC pipe
New 200mm HPVC pipe	New 200mm HPVC pipe
New 315mm HPVC pipe	New 315mm HPVC pipe
New conveyance 315mm HPPE pipe	New conveyance 315mm HPPE pipe
Reservoirs	Reservoirs
Valve	Valve
Existing hydrant	Existing hydrant
New hydrant	New hydrant

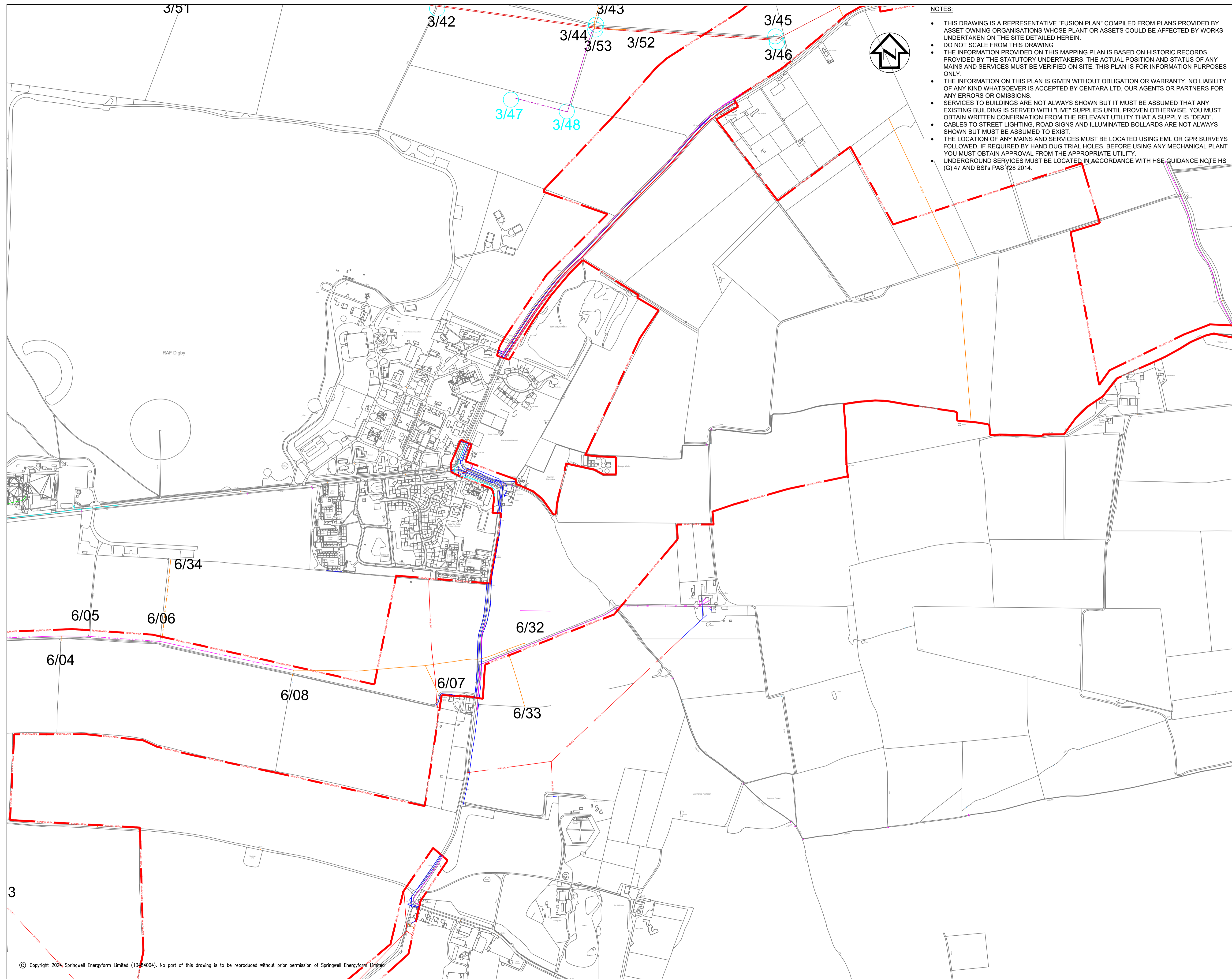
REVISION	01
DATE	NOV 2024
DESCRIPTION	DCO SUBMISSION
DRAWN	WSP
CHECKED	WSP
APPROVED	EDF
DOCUMENT	ENVIRONMENTAL STATEMENT VOLUME 2: FIGURES REGULATION 5(2)(a)
TITLE	FIGURE 5.1 DESK-BASED STUDY OF EXISTING UTILITIES SHEET 3 OF 5
PINS REFERENCE	EN10149/APP16.2

**Springwell Solar Farm**

SCALE:  
1:5000 @ A1

SCALE BAR:  
0 250 500m

SCALE 1:5000



- NOTES:**
- THIS DRAWING IS A REPRESENTATIVE "FUSION PLAN" COMPILED FROM PLANS PROVIDED BY ASSET OWNING ORGANISATIONS WHOSE PLANT OR ASSETS COULD BE AFFECTED BY WORKS UNDERTAKEN ON THE SITE DETAILED HEREIN.
  - DO NOT SCALE FROM THIS DRAWING
  - THE INFORMATION PROVIDED ON THIS MAPPING PLAN IS BASED ON HISTORIC RECORDS PROVIDED BY THE STATUTORY UNDERTAKERS. THE ACTUAL POSITION AND STATUS OF ANY MAINS AND SERVICES MUST BE VERIFIED ON SITE. THIS PLAN IS FOR INFORMATION PURPOSES ONLY.
  - THE INFORMATION ON THIS PLAN IS GIVEN WITHOUT OBLIGATION OR WARRANTY. NO LIABILITY OF ANY KIND WHATSOEVER IS ACCEPTED BY CENTARA LTD, OUR AGENTS OR PARTNERS FOR ANY ERRORS OR OMISSIONS.
  - SERVICES TO BUILDINGS ARE NOT ALWAYS SHOWN BUT IT MUST BE ASSUMED THAT ANY EXISTING BUILDING IS SERVED WITH "LIVE" SUPPLIES UNTIL PROVEN OTHERWISE. YOU MUST OBTAIN WRITTEN CONFIRMATION FROM THE RELEVANT UTILITY THAT A SUPPLY IS "DEAD".
  - CABLES TO STREET LIGHTING, ROAD SIGNS AND ILLUMINATED BOLLARDS ARE NOT ALWAYS SHOWN BUT MUST BE ASSUMED TO EXIST.
  - THE LOCATION OF ANY MAINS AND SERVICES MUST BE LOCATED USING EML OR GPR SURVEYS FOLLOWED, IF REQUIRED BY HAND DUG TRIAL HOLES. BEFORE USING ANY MECHANICAL PLANT YOU MUST OBTAIN APPROVAL FROM THE APPROPRIATE UTILITY.
  - UNDERGROUND SERVICES MUST BE LOCATED IN ACCORDANCE WITH HSE GUIDANCE NOTE HS (G) 47 AND BSI's PAS 128 2014.

**LEGEND: KEY**

ARELION	ARELION
BT	BT
COLT	COLT
CITYFIBRE	CITY FIBRE
CSP FIBRE	CSP FIBRE
LV	LV ELEC
HV	HV ELEC
EHV	EHV ELEC
ES PIPELINES	ES PIPELINES
EU NETWORKS	EU NETWORKS
EXOLUM	EXOLUM
FULCRUM	FULCRUM
GAMMA	GAMMA
LP GAS	GAS - LP
MP GAS	GAS - MP
IP GAS	GAS - IP
HP GAS	GAS - HP
GTC	GTC ELECTRIC
GTC	GTC GAS
GTT	GTT

**SEE KEY BELOW**

IRRIGATION	IRRIGATION
INSTALCOM	INSTALCOM
KCOM	KCOM
KPN	KPN
LAST MILE	LAST MILE
LU POWERLINK	LU POWERLINK
NEOS NET	NEOS NETWORK
SEARCH AREA	SEARCH AREA
SEWER >>	FW SEWER
SEWER >>	SW SEWER
SEWER >>	COM SEWER
SKYB	SKY
TATA	TATA
TFL	TFL
VERIZON	VERIZON
VIRGIN	VIRGIN
VODAFONE	VODAFONE
WATER	WATER
ZAYO	ZAYO
BPA	BPA


**LINES MAY INDICATE MULTIPLE CABLES**

**Blankney Estates Ltd**

**IRRIGATION**

Existing 8" plastic D
Existing 6" plastic D
Existing twin 6" cast
New 160mm HPVC pipe
New 200mm HPVC pipe
New 315mm HPVC pipe
New conveyance 315mm HPPE pipe
Reservoirs
Valve
Existing hydrant
New hydrant

REVISION	01
DATE	NOV 2024
DESCRIPTION	DCO SUBMISSION
DRAWN	WSP
CHECKED	WSP
APPROVED	EDF
DOCUMENT	ENVIRONMENTAL STATEMENT VOLUME 2: FIGURES REGULATION 5(2)(a)
TITLE	FIGURE 5.1 DESK-BASED STUDY OF EXISTING UTILITIES SHEET 4 OF 5
PINS REFERENCE	EN10149/APP16.2



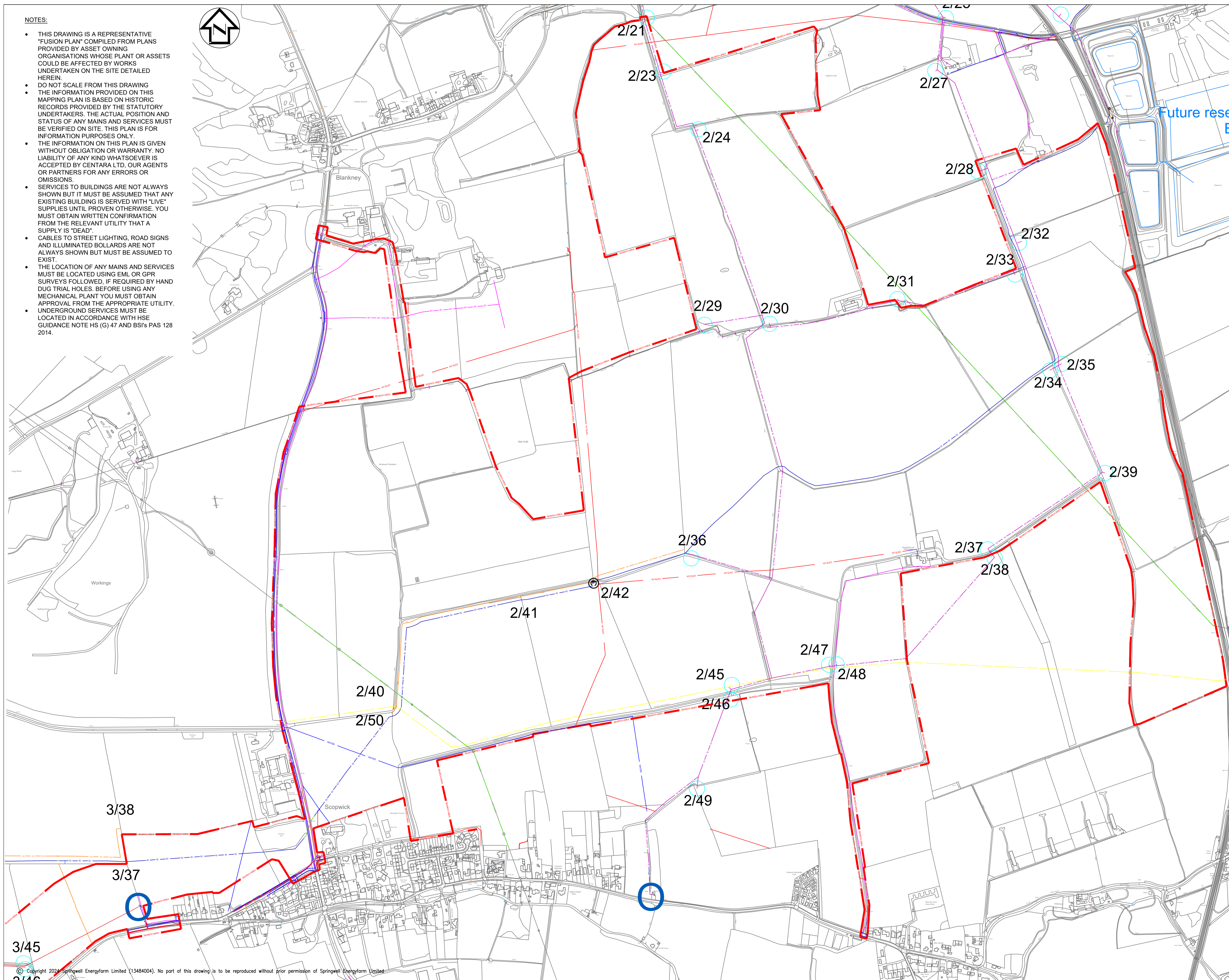
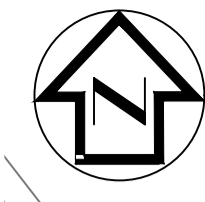
SCALE:  
1:5000 @ A1

SCALE BAR:  
0 250 500m

SCALE 1:5000

**NOTES:**

- THIS DRAWING IS A REPRESENTATIVE "FUSION PLAN" COMPILED FROM PLANS PROVIDED BY ASSET OWNING ORGANISATIONS WHOSE PLANT OR ASSETS COULD BE AFFECTED BY WORKS UNDERTAKEN ON THE SITE DETAILED HEREIN.
- DO NOT SCALE FROM THIS DRAWING.
- THE INFORMATION PROVIDED ON THIS MAPPING PLAN IS BASED ON HISTORIC RECORDS PROVIDED BY THE STATUTORY UNDERTAKERS. THE ACTUAL POSITION AND STATUS OF ANY MAINS AND SERVICES MUST BE VERIFIED ON SITE. THIS PLAN IS FOR INFORMATION PURPOSES ONLY.
- THE INFORMATION ON THIS PLAN IS GIVEN WITHOUT OBLIGATION OR WARRANTY. NO LIABILITY OF ANY KIND WHATSOEVER IS ACCEPTED BY CENTARA LTD, OUR AGENTS OR PARTNERS FOR ANY ERRORS OR OMISSIONS.
- SERVICES TO BUILDINGS ARE NOT ALWAYS SHOWN BUT IT MUST BE ASSUMED THAT ANY EXISTING BUILDING IS SERVED WITH "LIVE" SUPPLIES UNTIL PROVEN OTHERWISE. YOU MUST OBTAIN WRITTEN CONFIRMATION FROM THE RELEVANT UTILITY THAT A SUPPLY IS "DEAD".
- CABLES TO STREET LIGHTING, ROAD SIGNS AND ILLUMINATED BOLLARDS ARE NOT ALWAYS SHOWN BUT MUST BE ASSUMED TO EXIST.
- THE LOCATION OF ANY MAINS AND SERVICES MUST BE LOCATED USING EML OR GPR SURVEYS FOLLOWED, IF REQUIRED BY HAND DUG TRIAL HOLES. BEFORE USING ANY MECHANICAL PLANT YOU MUST OBTAIN APPROVAL FROM THE APPROPRIATE UTILITY.
- UNDERGROUND SERVICES MUST BE LOCATED IN ACCORDANCE WITH HSE GUIDANCE NOTE HS (G) 47 AND BSI's PAS 128 2014.



**LEGEND: KEY**

- ARELION
- BT
- COLT
- CITY FIBRE
- CSP FIBRE
- LV ELEC
- HV ELEC
- EHV ELEC
- ES PIPELINES
- EU NETWORKS
- EXCLUM
- FULCRUM
- GAMMA
- LP GAS
- MP GAS
- IP GAS
- HP GAS
- GTC
- GTC ELECTRIC
- GTC GAS
- GTT

- SEE KEY BELOW**
- IRRIGATION
  - INSTALCOM
  - KCOM
  - KPN
  - LAST MILE
  - LU POWERLINK
  - NEOS NETWORK
  - SEARCH AREA
  - FW SEWER
  - SW SEWER
  - COM SEWER
  - SKY
  - TATA
  - TFL
  - VERIZON
  - VIRGIN
  - VODAFONE
  - WATER
  - ZAYO
  - BPA

**LINES MAY INDICATE MULTIPLE CABLES**

- Blankney Estates Ltd**
- IRRIGATION
  - Existing 8" plastic D
  - Existing 6" plastic D
  - Existing twin 6" cast
  - New 160mm HPVC pipe
  - New 200mm HPVC pipe
  - New 315mm HPVC pipe
  - New conveyance 315mm HPPE pipe
  - Reservoirs
  - Valve
  - Existing hydrant
  - New hydrant

REVISION	01
DATE	NOV 2024
DESCRIPTION	DCO SUBMISSION
DRAWN	WSP
CHECKED	WSP
APPROVED	EDF
DOCUMENT	ENVIRONMENTAL STATEMENT VOLUME 2: FIGURES REGULATION 5(2)(a)
TITLE	FIGURE 5.1 DESK-BASED STUDY OF EXISTING UTILITIES SHEET 5 OF 5
PINS REFERENCE	EN10149/APP16.2

